



Letter from the President

New—defined as not existing before, discovered for the first time or introduced. When I think about the remaining months in this year, we are fast approaching a brand NEW year, one that we have not seen before so we will walk into the newness of 2023.

A new year, a new month, a new week, a new day, a new hour, a new minute and a new second. I am looking forward to a great new start to 2023 and all of the potential growth and progress our Neighborhood Association will experience. Don't miss out — be a part of the movement. Neighborhoods don't just come and go they remain for years and years because history and legacy are both created within these areas. Generations of families live in Neighborhoods so they are not defined under new but the changes that occur within them bring new houses, new families, new structures, new stories, new familiarity and new identity. It takes hard work and dedication to preserve what was old as it emerges into the new.

I am a native resident of Asheville and East End so it means a lot to me for East End to be recognized as the Neighborhood it used to be and the Neighborhood it has become. That translates into past and future and they can both be brought to the forefront without one identification losing the other. Join us in the journey and become a part of where you reside and help to make our Neighborhood thrive and continue to be great! Enjoy the holiday season and best wishes to you and your families.

Renee White
President

East End /Valley Street Neighborhood Association



Calvary Presbyterian Church Presents

Becky Stone

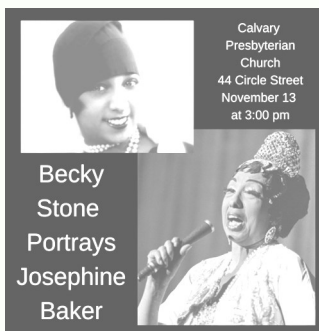
Becky Stone will present her rendition of Josephine Baker **November 13, 2022**, at Calvary Presbyterian Church **at 3:00 pm**. Calvary is located at 44 Circle Street in Asheville. The performance is free, but a plate for a freewill offering will be passed around.

Becky Stone was born and raised in Philadelphia, Pennsylvania. She has been a Chautauqua scholar since 2003 when she first presented Pauli Murray. Her other characters are Harriet Tubman, who she portrayed at Calvary last year, Rosa Parks, Maya Angelou, and Josephine Baker.

Becky also performs as a storyteller at festivals, libraries, and schools — specializing in African-American history and stories, and audience participation stories and songs.

Josephine Baker was an American-born French dancer and singer who symbolized the beauty and vitality of Black American culture, which took Paris by storm in the 1920s. She went on, in her flamboyant style, to become one of the most popular music hall entertainers in France.

Sarah Williams



Executive Board

President Renee' White
Vice President..... Gwen Jones
Secretary Laura McPherson
Treasurer Roberta Allen
Assistant Treasurer Jim Abbott
Assistant Treasurer ...Sharon Greene
Member at Large Helen Lindberg
Member at Large ..Jené "Lupie" Blake
Member at LargeNick Dugan
Member at Large Garland Walker
Editor Vera Williams

East End Valley Street Neighborhood Association Meeting Thursday, November 10, 2022

There will be an East End/Valley Street Neighborhood Association Meeting held on Thursday, November 10, 2022 at **6 pm at St. James AME Church**, 44 Hildebrand Street. Masks are encouraged!

This meeting is for East End/Valley Street residents only. If you are not a resident and would like to present something to the neighborhood, please contact us at: EastEndValleyStreet@gmail.com so that we can see about fitting you into the agenda.

We hope to see you there!

Inside this Issue

St. Matthias Easement	2
GW Carver Workday.....	2
Stephens-Lee Center.....	3
Voting Info / Miscellaneous	4
Dental Assistance Program	5-6
2022 Festival Highlights	7-12
Acknowledgements/Misc.	13-14

Dr. George Washington Carver Edible Park Work Day

Join us for another community work day at the Dr. George Washington Carver Edible Park on **November 18 from 2:30pm to 5:30pm!** The park is located at 30 George Washington Carver Avenue. There is parking in the Stephens Lee Recreation Center parking lot. Lynx Bergdahl, from Bountiful Cities, will be guiding us. There will be no work day in December, but we will start up again in January. Masks are encouraged! We will have some extra tools for folks to use as well as hand sanitizer, but any gloves, loppers, pruners or weeding tools you can bring are much appreciated.

Every month we focus on mulching, light tree and shrub pruning, picking up trash and clearing invasives. We occasionally do some planting depending on the season and what is available. We will include a hands on demo of each technique as well as a tour of the park. Come give your time and support to Asheville's first edible forest ecosystem! We look forward to seeing you! The community workdays being presented for the residents of the City of Asheville are in partnership with the City of Asheville and Bountiful Cities. For the most up-to-date information, please visit the Dr. George Washington Carver Edible Park Facebook Page: <https://www.facebook.com/Dr-George-Washington-Carver-Edible-Park-620672487> 948577

Helen Lindberg



Garland Walker and David Jones

St. Matthias and City Sign Easement to Enable Sidewalk Improvement

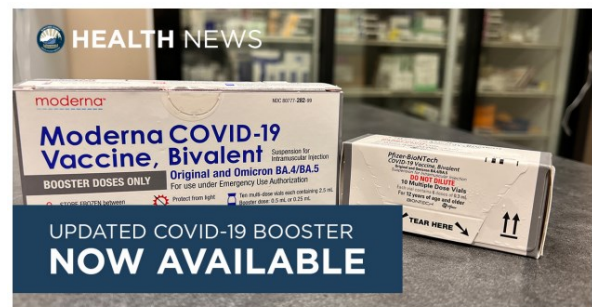
On October 11, the vestry (board) of St. Matthias Episcopal Church signed an easement to provide a 10-foot nonexclusive permanent easement of approximately 2,189 sq ft (or 0.05 of an acre) and a contiguous 10-foot temporary easement (for construction period only) to the city of Asheville to permit widening and improvement of the sidewalk along its southern property line adjacent to White Labs Brewing Company. The sidewalk connects what is now Martin Luther King Jr. Drive ("MLK") with what is now South Charlotte Street and is used frequently by residents in the interior of the East End/Valley Street (EEVS) neighborhood. The path on which the sidewalk sits was originally a section of South Beaumont Street that was rerouted during urban renewal; the pathway/road has served as a public thoroughfare for at least 130 years.

Now that the easement is signed, the city will start to design the improved sidewalk. Preliminary discussions are that it will be 5 feet wide and that the section along St. Matthias hill will have a four-foot high retaining wall. The EEVS Neighborhood Association will be involved in the design as it gets underway.

Laura McPherson



Buncombe County Providers Offering Updated COVID Omicron Booster Doses for Adults and Adolescents Ages 12+



In early September, the Food and Drug Administration (FDA) authorized—and the Centers for Disease Control and Prevention (CDC) recommended—two updated boosters. The boosters target two Omicron subvariants, BA.4 and BA.5. These are by far the most contagious versions of SARS-CoV-2 to date, with BA.5 accounting for nearly 90% of cases in the United States. Updated (bivalent) COVID-19 boosters provide better protection against the BA.4 and BA.5 subvariants of COVID-19. The boosters (one from Pfizer-BioNTech for ages 12 and up; the other from Moderna for ages 18 and up) are authorized under an FDA emergency use authorization (EUA).

Updated boosters are available on a walk-in basis (no appointment needed) at the Buncombe County Health and Human Services Clinic at 40 Coxe Avenue, Monday through Friday, between 8:00 AM and 4:30 PM. You can also consult your doctor or local pharmacy.

Helen Lindberg

Stephens-Lee Recreation Center

COFFEE AND CORN HOLE

Thursdays, **November 3-December 15**, 10-11:15am **FREE**

Grab a mug of joe and play a round of corn hole.

COMMUNITY BINGO

Saturday, **November 12**, 1-2:30pm, **FREE**

Prizes will be awarded to the winner of each game. Win like never B4.

BEGINNER PICKLEBALL CLINIC

Friday, **November 18**, 6-8:30pm, **FREE**

Beginners, come learn the skills you need to play the fun game of pickleball.

KIDS NIGHT IN

Friday, **December 2**, 6-8pm, **\$5**

Let your child work off that extra energy with a fun filled night of themed gas, crafts and special activity. Light dinner served.

WHERE DID THE GINGERBREAD MAN GO?

Tuesday, **December 6**, 10-11am **\$5**

Ages 3-5 with parent

The gingerbread man has run away and we need your help to find him. Play games to find clues, make gingerbread cookies and other surprises.

BREAKFAST WITH SANTA

Saturday, **December 10**, 9am and 10:30am, **\$8**

Ages 2-9 with parent

Have breakfast with Santa and celebrate the holidays with a morning full of fun. Space is limited, reservations required.

JINGLE BELL TODDLER PARTY

Wednesday, **December 14**, 10-noon, **\$5**

Jingle bells, reindeer magic and a snowball toss are part of the fun. The gym is packed with inflatables, toys, activity tables and light refreshments. There might even be a special visitor for those who need to double check their lists.

OLD SCHOOL LINE DANCING

Thursdays, **6:15-7:15pm**

Stephens-Lee Center

Come shake your groove thing to the old school dances you remember. Instructor Brenda Mills keeps it upbeat and fun so join this **FREE** class today.

Kimberly Kennedy, Facility Manager

Stephens-Lee Recreation Center

30 George Washington Carver Avenue

Asheville, NC 28801

828-350-2058

828-552-1888 city cell

kkennedy@ashevillenc.gov

www.ashevillenc.gov

She/Her/Hers

Get Your **Flu Shot**



This year could be a rough flu season. The flu virtually disappeared for two years as the COVID pandemic raged. But influenza appears poised to stage a comeback this year in the U.S., threatening to cause a long-feared "twindemic." While the flu and the coronavirus are both notoriously unpredictable, there's a good chance COVID cases will surge again this winter, and troubling signs that the flu could return too.

For the 2022-2023 flu season the CDC recommends use of any licensed, age-appropriate flu vaccine as an option for vaccination. Everyone 6 months and older should get a flu vaccine every season with rare exceptions. Vaccination is particularly important for people who are at higher risk of serious complications from influenza.

The Buncombe County Immunizations Clinic is located at 40 Coxe Avenue in downtown Asheville. They offer two options for getting your Flu immunization at their facility. First, you can call (828) 250-5096 and make an appointment that fits your schedule. They also offer a wide range of walk-in hours for your convenience. Walk-in hours are Monday, Wednesday, and Friday between 8-11:30 AM and on Tuesday and Thursday between 1-4:30 PM. You can also consult your doctor or local pharmacy.

Helen Lindberg



"Gratitude turns what we have into enough."

Anonymous



BUNCOMBE COUNTY ELECTION SERVICES

EARLY VOTING 2022 GENERAL ELECTION

OCTOBER 20 THROUGH NOVEMBER 4

**NOVEMBER 5
(LAST DAY)**

**MONDAY - FRIDAY
8:00 AM - 7:30 PM**

**SATURDAY 10/29 AND SUNDAY 10/30
10:00 AM - 3:00 PM**

**SATURDAY
8:00 AM - 3:00 PM**

1 BLACK MOUNTAIN LIBRARY
105 N. DOUGHERTY ST.
BLACK MOUNTAIN, 28711

5 FAIRVIEW LIBRARY
1 TAYLOR ROAD
FAIRVIEW, 28730

9 SOUTH BUNCOMBE LIBRARY
260 OVERLOOK ROAD
ASHEVILLE, 28803

2 ELECTIONS WAREHOUSE
50 COXE AVE.
ASHEVILLE, 28801

**6 FRIENDSHIP
COMMUNITY CENTER**
142 SHILOH ROAD
ASHEVILLE, 28803

**10 WEAVERVILLE
COMMUNITY CENTER**
60 LAKESHORE DRIVE
WEAVERVILLE, 28787

3 EAST ASHEVILLE LIBRARY
3 AVON ROAD
ASHEVILLE, 28805

**7 LEICESTER
COMMUNITY CENTER**
2979 NEW LEICESTER HWY
LEICESTER, 28748

**11 WESLEY GRANT
SOUTHSIDE CENTER**
285 LIVINGSTON ST.
ASHEVILLE, 28801

4 ENKA-CANDLER LIBRARY
1404 SAND HILL ROAD
CANDLER, 28715

8 NORTH ASHEVILLE LIBRARY
1030 MERRIMON AVE
ASHEVILLE, 28804

12 WEST ASHEVILLE LIBRARY
942 HAYWOOD ROAD
ASHEVILLE, 28806

For more information, including how many voters are currently in line, visit buncombecounty.org/vote, or call our office at **(828) 250-4200**



**PACK SQUARE
PLAZA VISIONING**

Please join us! Help us create a community Vision for the future of Pack Square Plaza.





The visioning process began in September 2022 and will continue through Spring of 2023

Get Engaged!

- Plan to attend one (or several!) of many focused, public engagement sessions Dec. 1-3, 2022
- Answer a quick survey and find engagement details at publicinput.com/packsquare
- Experience temporary public artwork and performances through Art in the Heart, learn more and share feedback at ashevillenc.gov/artintheheart

Pack Square Plaza includes the location of the former Vance Monument which symbolized a painful era in American history. The removal of the monument is a step toward this space becoming a place for healing, celebration, reflection and joy. City and County leaders are embracing the community's aspiration to heal and laying the foundation for a new equitable and inclusive public space. The project will create a new Vision for this central gathering place as well as improved connections to nearby areas including The Block.



More information:
www.ashevillenc.gov/packsquare
Contact: Stephanie Monson Dahl
City of Asheville,
smonson@ashevillenc.gov

The unthankful heart... discovers no mercies; but let the thankful heart sweep through the day and, as the magnet finds the iron, so it will find, in every hour, some heavenly blessings!
Henry Ward Beecher



EAST END VALLEY STREET'S DENTAL ASSISTANCE PROGRAM

**Free Basic
Dental Care for
Low-Income
Seniors who
are East End
Valley Street
Neighborhood
residents.**

**FREE
Dental
Assistance**

Dental Evaluations

This includes
X-rays and
treatment
planning

Cleanings

Basic dental
cleaning per
treatment plan

Fillings/ Teeth Extractions

Care will be
limited per
treatment plan



WNC Bridge Foundation*
A PARTNERSHIP FOR HEALTH

Western NC Community Health Services will provide dental services.

*No cosmetic services are eligible.

For more information - 828-713-4644
EEVSDentalAssistanceProgram@gmail.com

The East End Valley Street Neighborhood Associated is committed to initiatives that improve the quality of life of current and future residents, including community-based health support. The East End Valley Street Dental Assistance Program is made possible with the help of the Western Carolina Community Health Services and WNC Bridge Foundation.



EAST END VALLEY STREET DENTAL ASSISTANCE PROGRAM

Application & Proof of Eligibility Requirements

All East End Valley Street Neighborhood residents who want to participate in the Dental Assistance Program must meet the eligibility requirements outlined below.

Name: _____

Address: _____

Home Phone: _____

Cell Phone: _____

Email: _____



_____ **I am aged 60 or above**

_____ **My income is below 200% of the Federal Poverty Level**

_____ **I live within the East End Valley Street Neighborhood boundaries**

_____ **I do not have dental insurance**

****Please note: Verification will be needed prior to your initial dental appointment being made.**

Signature: _____ **Date:** _____

**Send your application to: Mr. David Jones, Program Coordinator, EEVS Dental Assistance Program, P.O. Box 7341, Asheville, NC 28802 or
EEVSDentalAssistanceProgram@gmail.com**

2022 Community Heritage Festival Highlights

Connie Jefferson
Festival Coordinator



Lilly Allen
Logo Designer



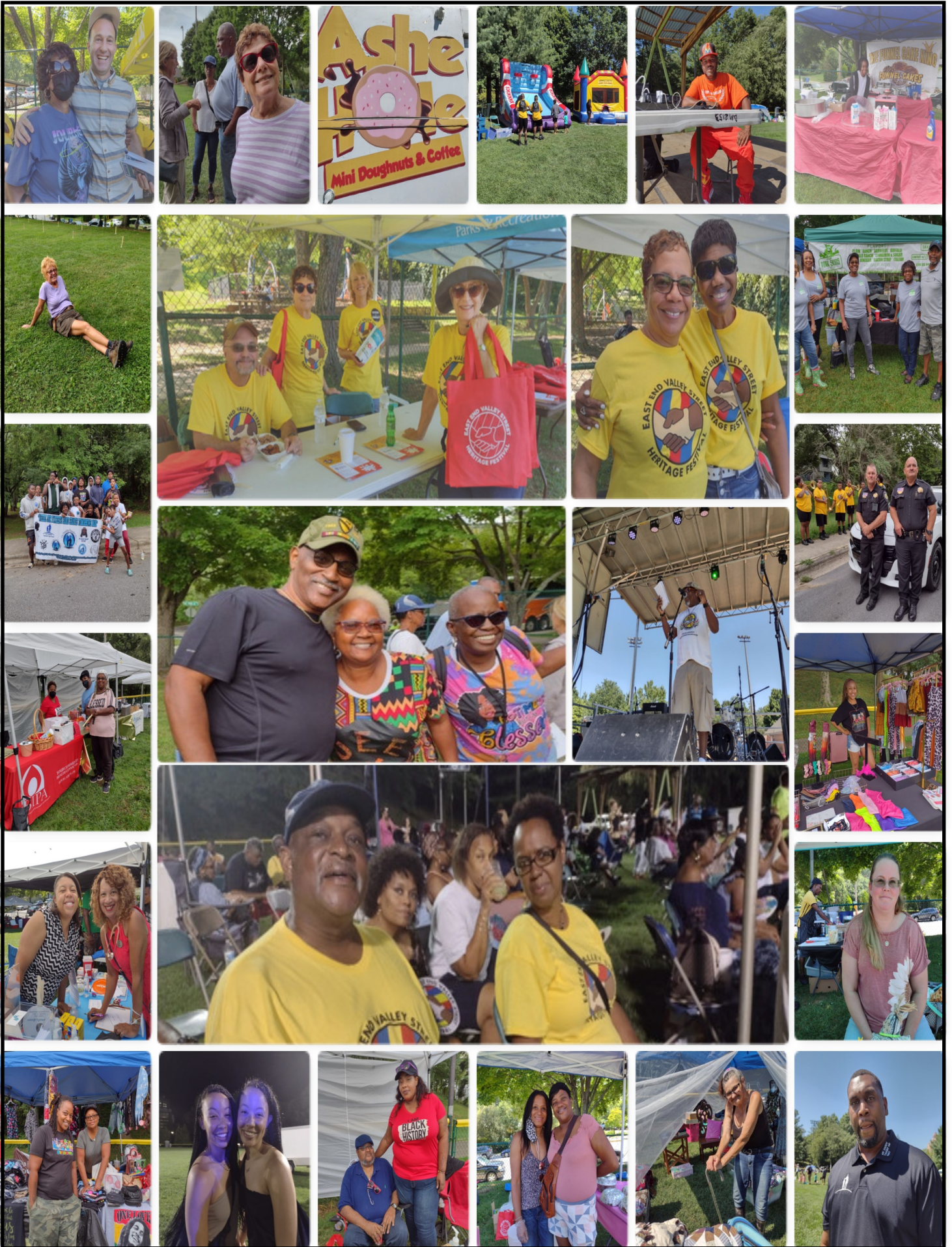
In Recognition of Ms. Poole
who is the oldest
living East End resident.



Family of Mack Moore
receiving plaque as this years
festival dedicated in his honor.













Thank you!

To our Sponsors, to everyone who gave donations for the festival and raffle, to the volunteers, to Connie Jefferson for organizing the event, to LEAF Global for the stage, to all the vendors, to The Buncombe County Sheriff's Department, to The City of Asheville, to Buncombe County, to Explore Asheville, to New Belgium Brewing, to the Asheville Tourists "Mr. Moon" mascot, to the Bubble Master—Steve Henry, to Asheville Parks & Recreation's entire Stephen's Lee staff, and to everyone who attended the festival.

We are looking forward to 2023!

Reneé White, President



November will be the last meeting for 2022 for the entire Neighborhood until March 2023. The Executive Committee will continue to meet and if anyone needs to contact us they can email the Neighborhood at: eastendvalleystreet@gmail.com or reneew1107@yahoo.com.

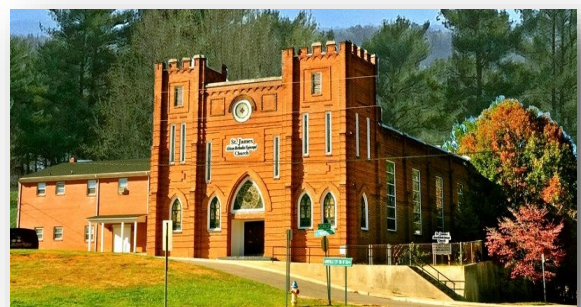
*Welcome to our new
Executive Board Members:*

- * Vice President —Gwen Jones
- * Assistant Treasurer — Sharon Greene
- * Member at Large — Nick Dugan
- * Member at Large — Garland Walker

Thank you for serving!!



After three years of restorations...



St. James AME Church is open and back to having services in the sanctuary.

St. James held a Restoration Service on Sunday, October 2, 2022 to celebrate its reopening.



